





Delivering excellence in Madurai City with the combined experience of over 70 years. Max Properties helps you take your dreams to reality. Have Completed several projects, the company has established in Tier 2 & 3 Cities for Government & Private clients as well. At Max, all our endeavors revolve around just one entity – our customers. Their need, dreams and aspirations are pivotal to our decisions. Building Dreams & Delivering excellence for many years while the Provident brand is positioned in the premium affordable segment. Meeting the aspiration of every family by offering quality homes is the Mission of Max. A future wherein our brand symbolizes unique landmarks and superior community living of the highest standards of quality and customer delight.

## ROUTE MAP



## LOCATION ADVANTAGES

### - Near by bus stops

- Ponmeni Bus Stop - 2 mins
- Chokkalinga Nagar Bus Stop - 3 mins

### - Near by supermarkets

- Nilgiris Super Market - 2 mins

### - Near by Hospital

- Apollo Diagnostics Hospital - 3 mins
- Aristo speciality Hospitl - 7 mins

### - Near by schools

- Jeevana school - 5 mins

### - Other services

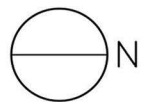
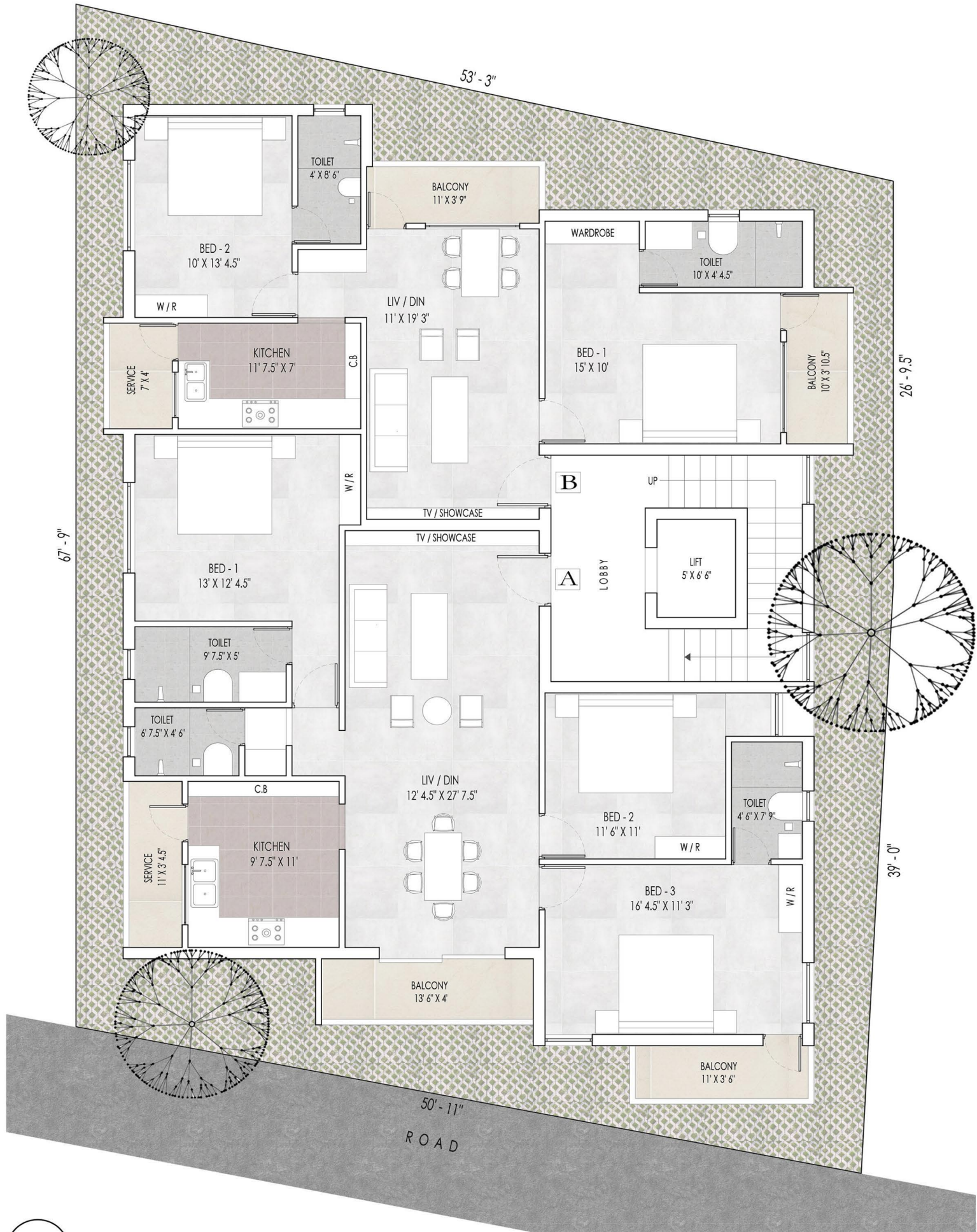
- Bharat Petrol Bunk - 3 mins
- Bank of Baroda , S.S.Colony - 1 min
- SBI Bank , Arasaradi - 1 min

# TYPICAL FLOOR PLAN



MAX PROPERTIES PVT.LTD.  
BUILDING TRUST... PROMOTING HAPPINESS...

Built Up Area - 2874 sq.ft



# INDIVIDUAL FLAT PLAN



MAX PROPERTIES PVT.LTD.  
BUILDING TRUST... PROMOTING HAPPINESS...

Flat A ( 3bhk ) Super Built Up Area - 1725 sq.ft

UDS - 710 sq.ft



## KEY PLAN



MAX ANANTHA

## Specifications



MAX PROPERTIES PVT.LTD.  
BUILDING TRUST... PROMOTING HAPPINESS...

Deep Foundation With Framed Structure.

### Wall finishes



**Interior** : Smooth finish full putty with durable plastic emulsion point.

**Exterior** : Outer wall with premium quality exterior emulsion paint.

**Kitchen & Bathroom** : Ceramic tiles for 2 ft and 7 ft height respectively.

### Floor finishes



**Common areas** : Heavy Duty Vitrified tiles.

**Living, Dining** : Vitrified tiles with skirting.

**& Bedroom**

**Kitchen, Balcony** : Non-Slippery vitrified tiles.

**& Bathroom**

### Windows



**Bedroom & Kitchen** : UPVC Sliding / Open type windows with glass panels.

**Bathroom** : UPVC Ventilators.

### Doors



**Main door** : Teak wood frame with factory made design door.

**Bedroom** : Factory made design doors with seasoned countrywood frames.

**Bathroom** : WPC Frame with Shutter.

### Fittings



**Kitchen** : Stainless steel sink and tap with polished granite counter top.

**Bathroom** : Water closet, shower rose with hot and cold mixer and wash basin.

**Electrical** : Modular switches and M.C.B. Provision for Aircondition in all bedrooms.  
Provision for UPS.

**Cupboards** : Elegantly finished closed type showcase, wardrobes and lofts in bed rooms and kitchen cupboards.

## Project amenities

## Other provisions



Covered car parking



Intercom facility



Rainwater harvesting



Telephone



Cable TV



Surveillance camera with internet security system.



Power backup for Kone automatic lift & common area.



Corporation drinking water supply



Cloth drying



Broadband(Wifi)

MAX ANANTHA



Price details

S&A

<b>Max Anantha Rs.8000/- Per Sq.Ft</b>	
	<b>Flat A (II &amp; III)</b>
Super Built Up Area	1725
Building cost ( Including Car Parking)	1,41,00,000
EB & Water Charges	4,00,000
<b>Total Cost</b>	<b>1,45,00,000</b>
<b>* GST &amp; Stamp Duty Cost Extra*</b>	
On Booking	10%
Delivery	90%
<b>Max Properties Pvt. Ltd.</b>	
<b>Office:Max Plaza (Max Residency), First Floor, Arunachalam Street,</b>	
<b>North Gate of S.S.Colony, Madurai - 625 010.</b>	
<u>Website: <a href="http://www.maxproperties.co.in">www.maxproperties.co.in</a> ,</u>	
<u>E-mail: <a href="mailto:maxpropertiesindia@gmail.com">maxpropertiesindia@gmail.com</a></u>	
<b>Contact Number : +91-9873130086</b>	